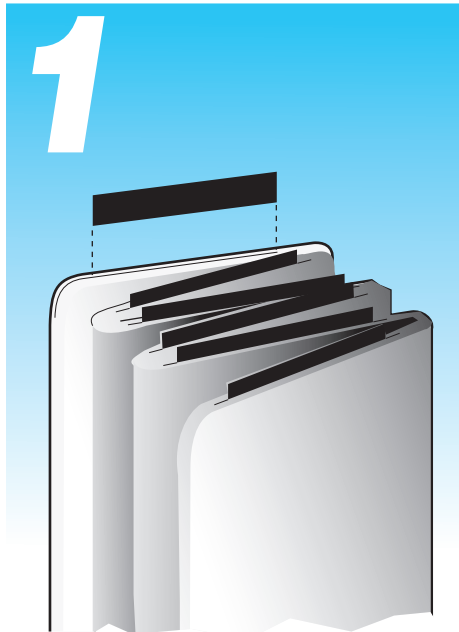
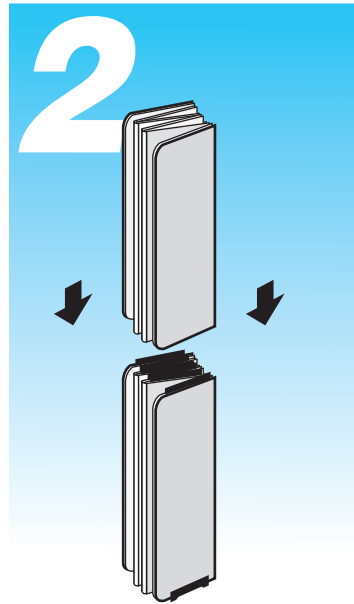


Palladian™ 12-Panel Set-Up Instructions

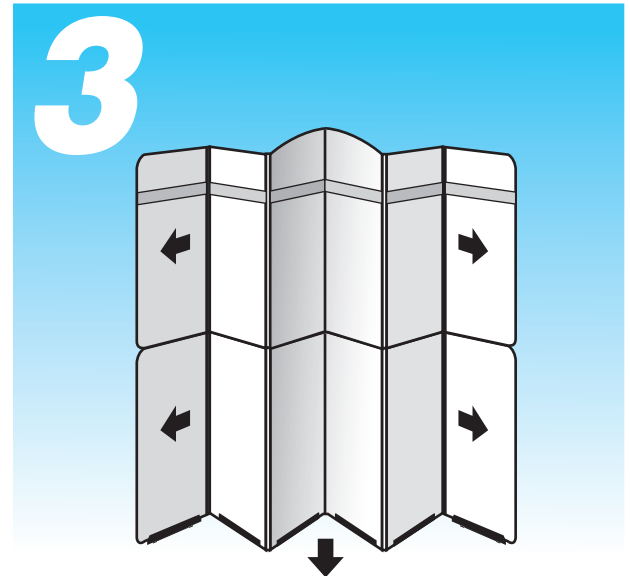
Other freestanding displays may fold differently but use same guide and panel system of stacking. See back for 6, 8, and 10 panel displays.
Tabletop Option: Either base or upper sections may be used independently as tabletop displays.



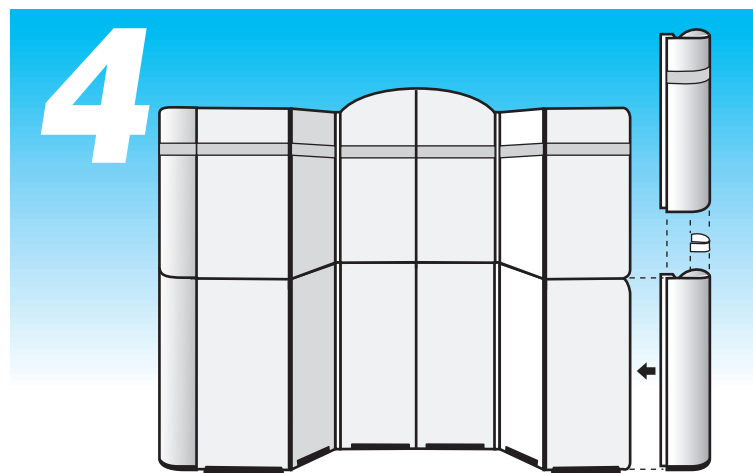
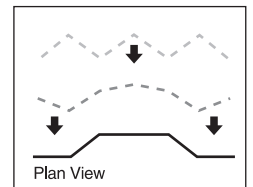
1
Locate **Six Panel Base** section (footed channels on bottom). Stand on feet and fold panels to form an accordion or zig zag effect. **Insert stacking guides** into grooves in top of base panels.



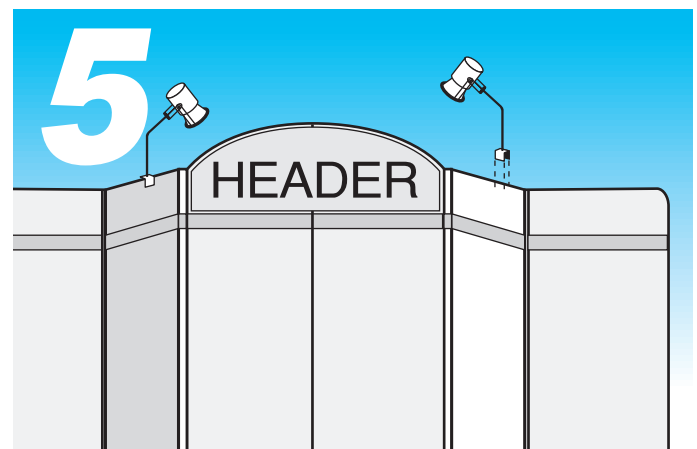
2
Rest upper section on base section. **Aligning upper panels to lower, work each panel onto** corresponding **guide on base panel**.



3
Unfold panels. Push center hinge forward and slide side panels forward so that the eight panel arch-top center section forms a recessed area for header.



4
If your display includes curved end caps, follow assembly instructions on reverse side. To **attach curve base sections** (black bands on bottom), **slide "U" channel of right and left curves onto corresponding panel edges**. Flexible **guides attach with velcro to inside base curves**. **Attach upper section of curve with "U" channel** as before and **slide down onto flexible guide** affixed to lower curve. **Set-up is complete and display is ready for graphics.**



5
Locate arch-top **header and graphics**. **All attach to fabric of display with velcro**. Position header in upper section of center panels, just above accent stripe. If your display includes optional **Halogen spot-lights - slide the "U" channel base of the fixture onto panel edges** along top of display.