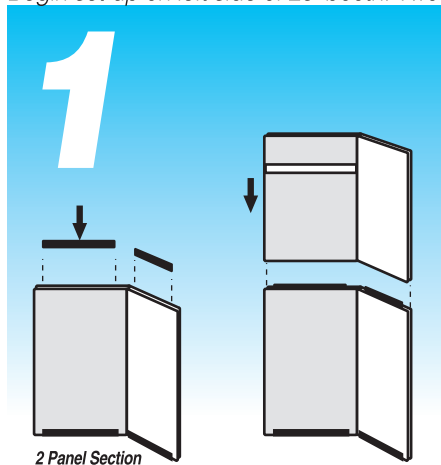


Monticello 20' Set-Up Instructions

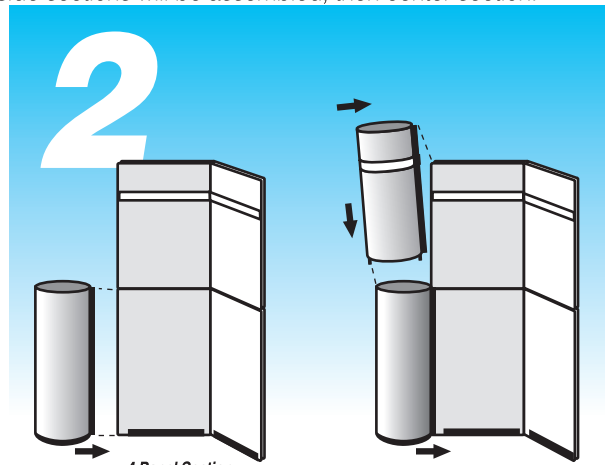
Assemble column sections first - Instructions on reverse side.

Begin set-up on left side of 20' booth. Two outside sections will be assembled, then center section.



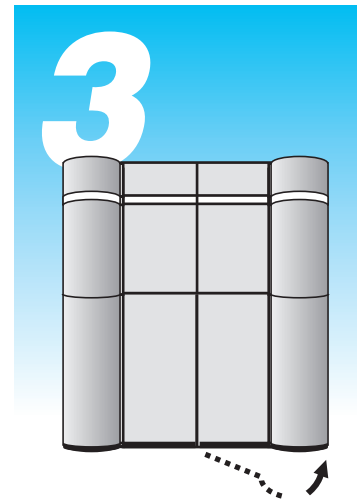
2 Panel Section

Locate **Two Panel Base** section (footed chanel on bottom). Stand on feet and fold at hinge to "L" shape angle. **Insert stacking guides** into grooves in top of base panels. Lower **Top Panel** onto base. The stacking guides insure proper alignment of upper and lower panels.

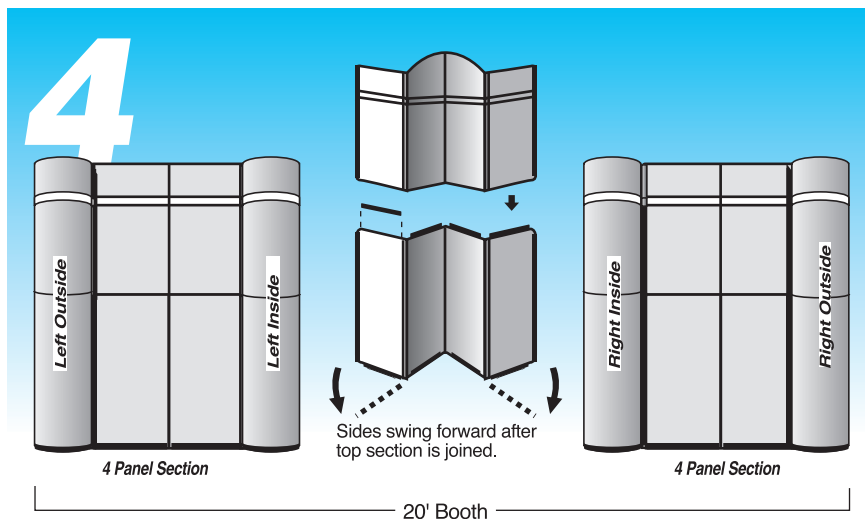


4 Panel Section

Locate **Left Outside Base column** (black band around base). Slip "U" channel on side of column onto side edge of base panel (Fabric side of "U" channel faces forward). Lower **Left Outside Top column** section onto base (alignment pins slip into square channels on base column) and work "U" channel on side of column onto side edge of upper panel.



Repeat Step 2 on other side of panel with **Left Center Base** and **Left Center Top column** sections. Swing column back to align panels and make display surface flat.



Sides swing forward after top section is joined.

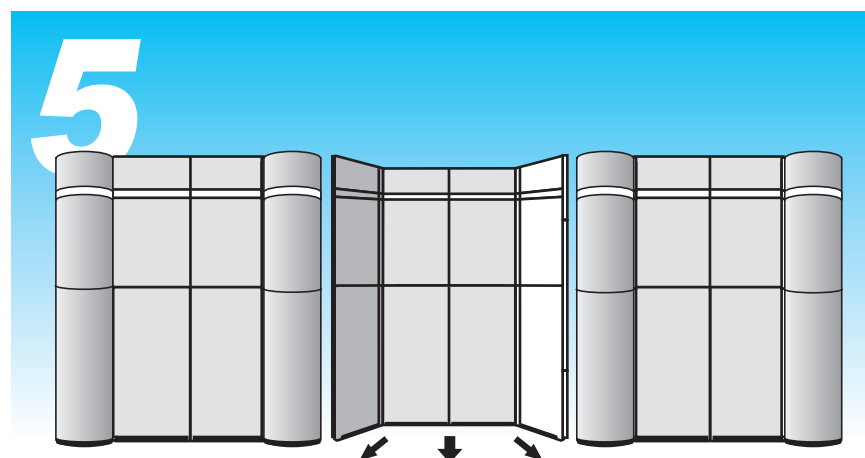
20' Booth

Locate **Right Center Column** sections (top and base) and **Right Outside Column** sections. Follow steps 1-3 to assemble remaining 4 panel section.

Begin set-up of center section with **Four Panel Base** between and approximately two feet behind columns of assembled side sections. **Insert stacking guides** in all sections of base panel.

With center section "accordion" folded, **lower upper section onto base** (Shown slightly unfolded in diagram for clarity).

Use the enclosed floor template to aid in aligning the display panels to the correct angles.



Push center hinge forward to make center of display area flat.

Slide entire center section forward so that the **side panels' magnetic edges contact magnetic strips on columns.**

Set-up is complete and display is ready for graphics.

For 10' Display Set-Up: attach **Left Outside Column and Right Outside Column** to center section of display.