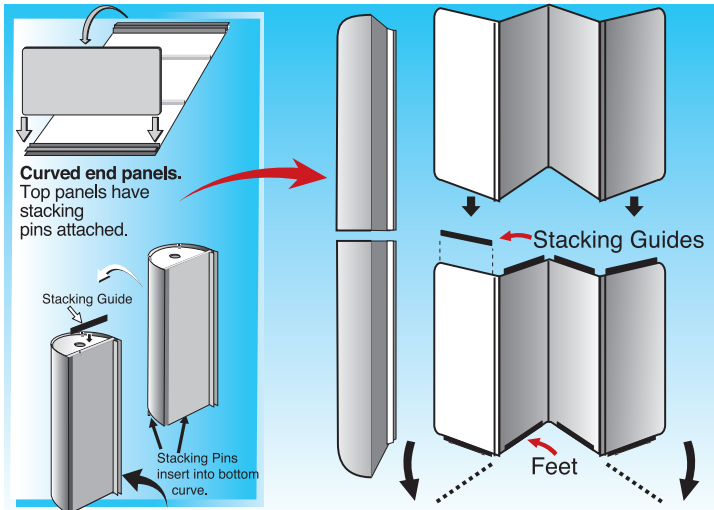
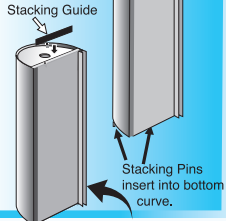


Regency 20' with counters



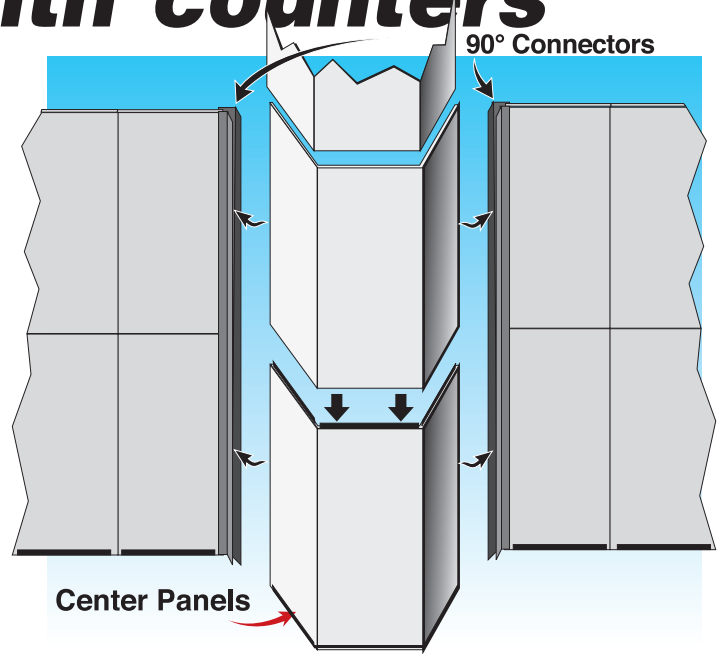
Curved end panels.
Top panels have stacking pins attached.



"U" channel

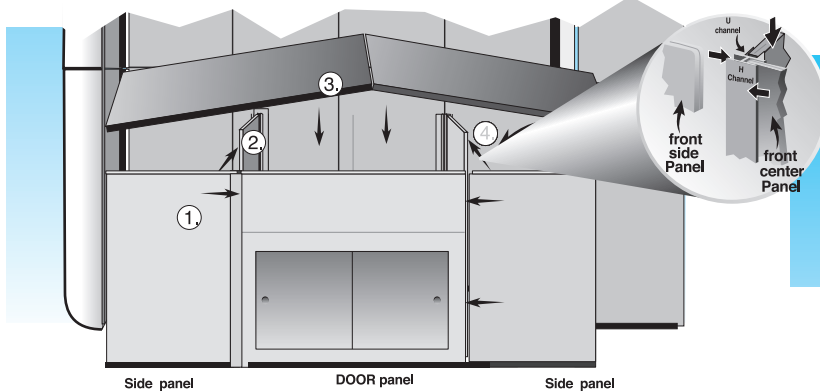
Curve ends go only one ends of unit, Center Sections attach back sections together.

Set up bottoms of 8-panel section of display in the middle of the 30' backwall of booth (these have black FEET on them). Sides swing forward after top section is joined. Be sure to **leave some angle** to the panels **until** the end curves are attached, **THEN** straighten. Curved end panels attach with **U Channels**.

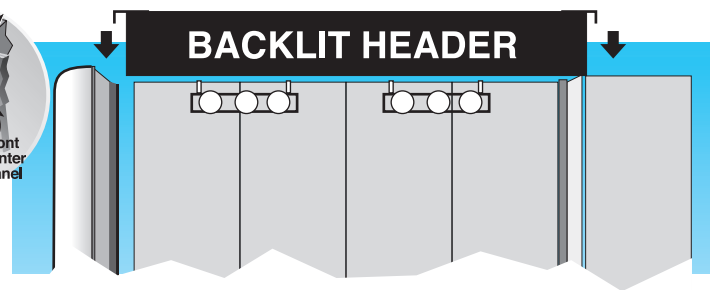


Center Panels

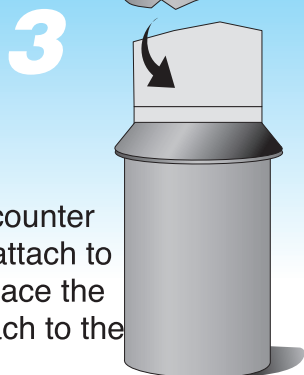
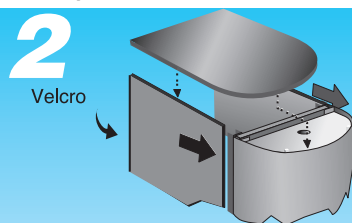
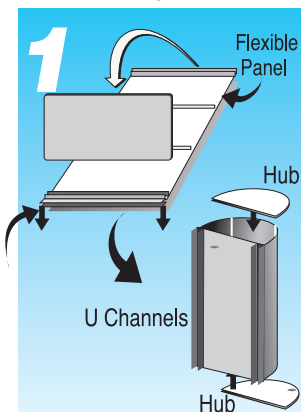
The 3 panel center sections attach to the back panels with **90° Connectors** They stack, just like the back panels, only there are also **three height** levels for each Center section. Repeat these assembly steps for the next 2 sections



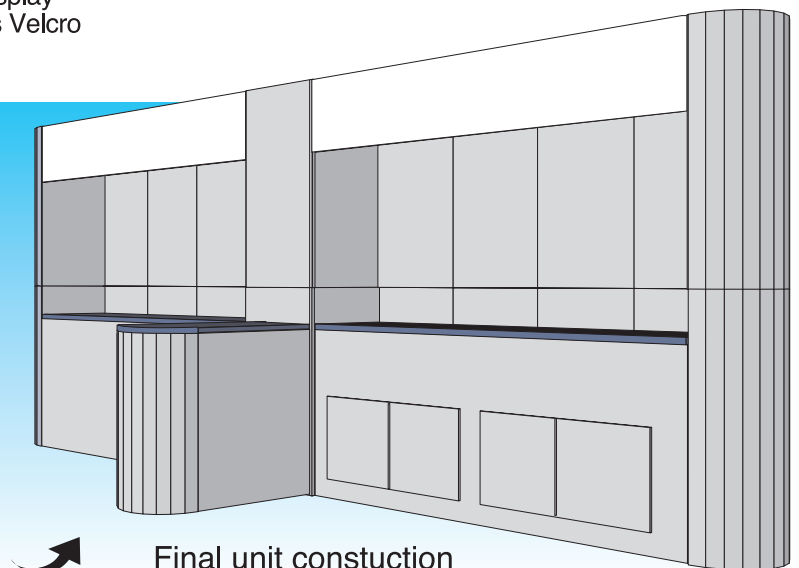
1. Slide side filler panels with "U" channel onto door panel and set in place flush with hinges on front of the display.
2. Slide narrow support panels into "U" channel and Velcro to display
3. Locate shelf and set onto top of door assembly. The shelf has Velcro along back edge to attach to the display panels.
4. Attach single joiner strips to single panels



When all three sections are complete, the headers can be attached as above.



Roll up the round end of the counter just like the end curves, and attach to the sides with U Channels. Place the top onto the counter, and attach to the center section with velcro.



Final unit construction should set up like this