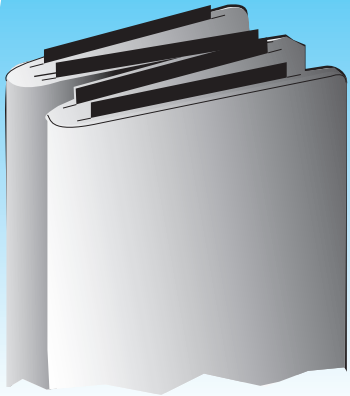


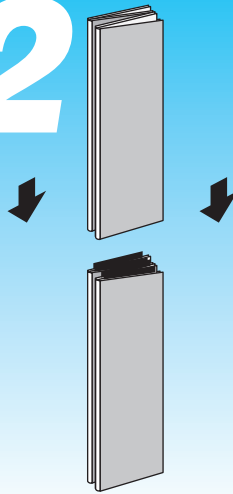
REGENCY 10' SET-UP INSTRUCTIONS

1



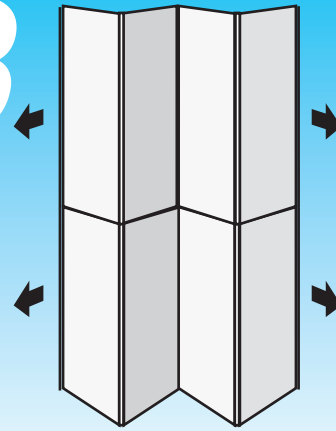
Locate **Four Panel Base** section (footed channels on bottom). Stand on feet and fold panels to form an accordion or zig zag. **Insert stacking guides** into grooves in top of base panels.

2

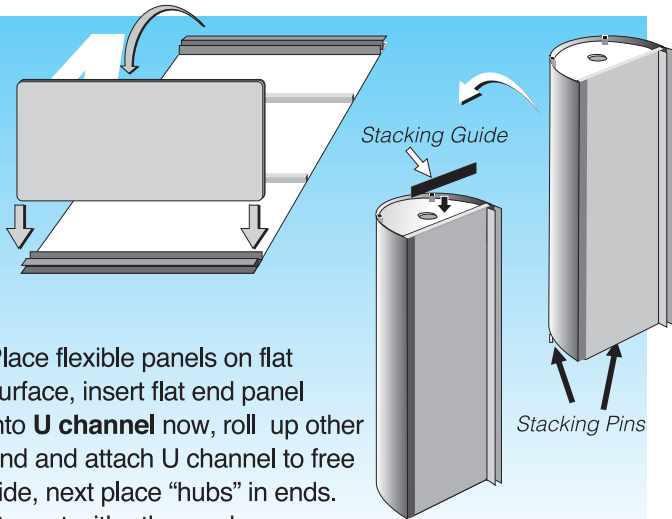


Rest upper section on base section. **Aligning upper panels to lower, work each panel onto corresponding guide on base panel.**

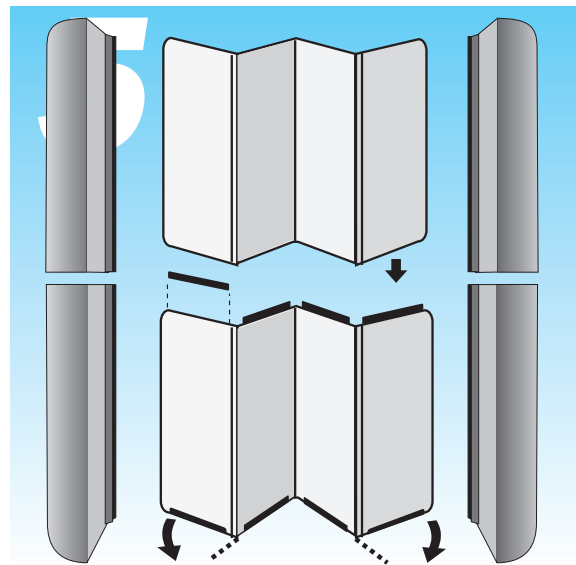
3



Unfold panels. Push center hinge forward and slide side panels forward, eventually this will form the back wall of the display for now leave the panels in a slight zig zag pattern.

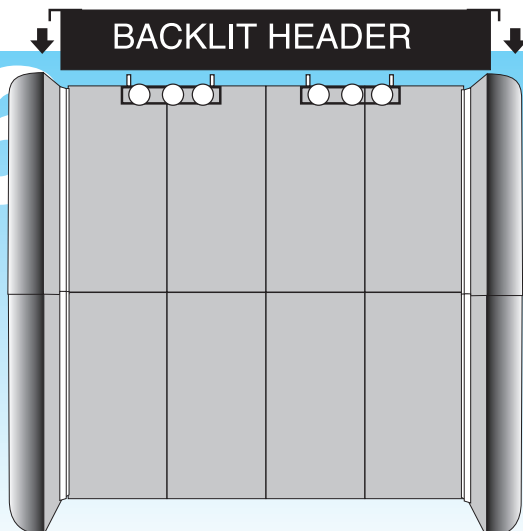


Place flexible panels on flat surface, insert flat end panel into **U channel** now, roll up other end and attach U channel to free side, next place "hubs" in ends. Repeat with other end curves. Use a "stacking guide" in the flat panels, stacking pins (in the top curve end insert into aluminum channels on lower end curve.L



Sides swing forward after top section is joined. Be sure to leave some angle to the panels until the end panels are attached.

6



If your unit includes a back lit header, **hang light bar** (brackets attached to fixture) **in center of display**. Assemble header according to instructions on header sheet **Header brackets hang over recessed side panels just behind front hinges.**

